

General Information

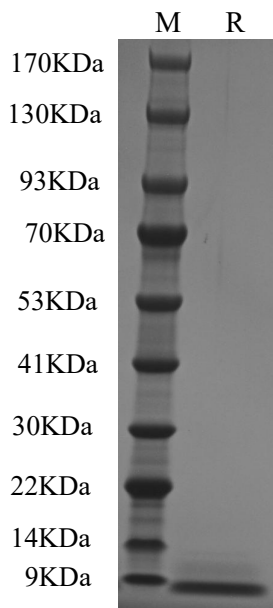
Source	<i>Escherichia coli</i>
Synonyms	Epidermal Growth Factor, Urogastrone, URG
Accession	P01133
Molecular Mass	6.2 kDa
Description	Recombinant Human EGF is a 6.2 kDa globular protein containing 53 amino acid residues, including 3 intramolecular disulfide bonds.
Shipping	The product is shipped at 4°C. Upon receipt, store it immediately at the temperature recommended below.
Stability & Storage	Aliquot the reconstituted solution to minimize freeze-thaw cycles. Lyophilized protein should be stored at -20°C to -80°C, stable for one year after receipt. Aliquots of reconstituted samples are stable at ≤ -20°C for 3 months.
Reconstitution	Centrifuge tubes before opening. Dissolve the lyophilized protein in distilled water. Do not mix by vortex. It is recommended to dissolve the product at a concentration of twice the specified specification.
Background	EGF is a potent growth factor that stimulates the proliferation of various epidermal and epithelial cells. Additionally, EGF has been shown to inhibit gastric secretion, and to be involved in wound healing. EGF signals through a receptor known as c-erbB, which is a class I tyrosine kinase receptor. This receptor also binds with TGF- α and VGF (vaccinia virus growth factor). Recombinant Human EGF is a 6.2 kDa globular protein containing 53 amino acid residues, including 3 intramolecular disulfide bonds.

Product For Research Use Only

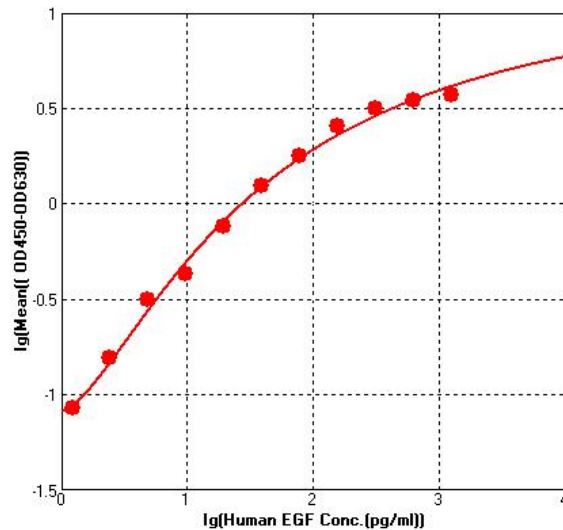
Specifications

Formulation	Lyophilized from sterile PBS, pH 7.4, 5% trehalose.
Purity	≥95% as determined by SDS-PAGE
Endotoxin	< 1EU/ug
Bioactivity	Recombinant Human EGF can be detected by ELISA with a linear range of 2.0-2,500.0 pg/mL. (EC50 = 95.18 pg/mL)

Data

SDS-PAGE


Greater than 95% as determined by reducing SDS-PAGE.

Bioactivity-ELISA


Recombinant Human EGF can be detected by ELISA with a linear range of 2.0 - 2,500.0 pg/mL. (EC50 = 95.18 pg/mL)

Product For Research Use Only