

General Information

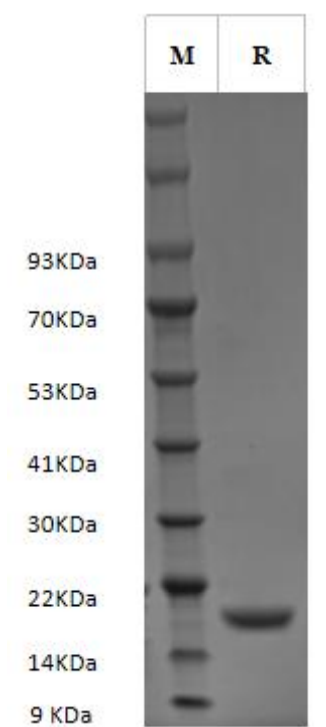
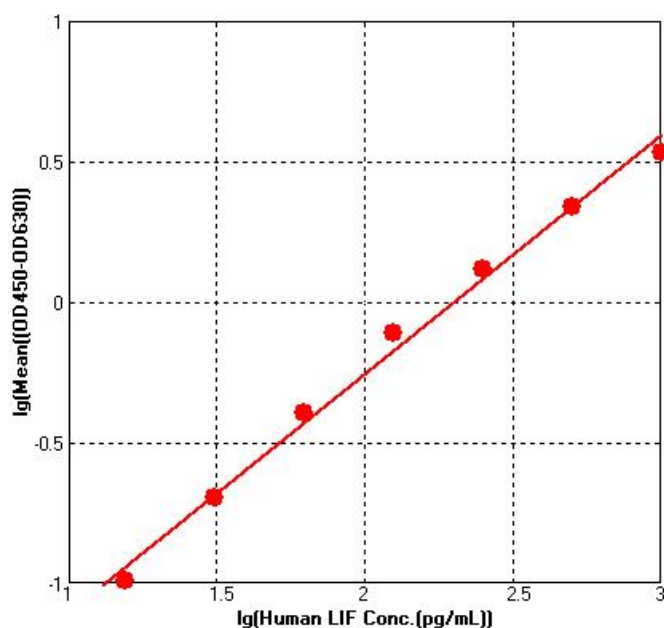
Source	<i>Escherichia coli</i>
Synonyms	Leukemia Inhibitory Factor, Differentiation-stimulating factor, D factor, Melanoma-derived LPL inhibitor (MLPLI), Interleukin 6 family cytokine
Accession	P15018
Molecular Mass	19.6 KDa
Description	Recombinant Human LIF is a 19.6 kDa protein containing 180 amino acids residues, including three disulfide bonds.
Shipping	The product is shipped at 4°C. Upon receipt, store it immediately at the temperature recommended below.
Stability & Storage	Aliquot the reconstituted solution to minimize freeze-thaw cycles. Lyophilized protein should be stored at -20°C to -80°C, stable for one year after receipt. Aliquots of reconstituted samples are stable at ≤ -20°C for 3 months.
Reconstitution	Centrifuge tubes before opening. Dissolve the lyophilized protein in distilled water. Do not mix by vortex. It is recommended to dissolve the product at a concentration of twice the specified specification.
Background	LIF is a pleiotrophic factor produced by multiple cell types, including T cells, myelomonocytic lineages, fibroblasts, liver, heart and melanoma. LIF promotes long-term maintenance of embryonic stem cells by suppressing spontaneous differentiation. Other activities include the stimulation of acute phase protein synthesis by hepatocytes, stimulation of differentiation of cholinergic nerves, and suppression of adipogenesis by inhibiting the lipoprotein lipase in adipocytes.

Product For Research Use Only

Specifications

Formulation	Lyophilized from sterile PBS, pH 7.4, 5% trehalose.
Purity	≥95% as determined by SDS-PAGE
Endotoxin	<1 EU/ug
Bio Activity	Recombinant Human LIF can be detected by ELISA with a linear range of 15.6-1,000.0 pg/mL.

Data

SDS-PAGE

Bioactivity-ELISA


Greater than 95% as determined by reducing SDS-PAGE.

Recombinant Human LIF can be detected by ELISA with a linear range of 15.6-1,000.0 pg/mL.

Product For Research Use Only