



MULTI SCIENCES

联科生物

Human Notch-1 ELISA Kit

Catalog Number: EK1364

Size: 48 Test, 96 Test

For the quantitative determination of human Notch-1 concentrations in cell culture supernates, serum and plasma.

This package insert must be read entirely before using this product. For proper performance, follow the protocol provided with each individual kit.

FOR RESEARCH USE ONLY. NOT FOR USE IN DIAGNOSTIC PROCEDURES.

MULTISCIENCES (LIANKE) BIOTECH CO., LTD.
3F, Building 2, No.1688 Tianma Road, Times High Tech Park,
Xiaoshan District, Hangzhou, Zhejiang Province, China.
www.multisciences.net
Tel: +86-057128874209
E-mail: info.cn@liankebio.com

TABLE OF CONTENTS

ASSAY PROCEDURE SUMMARY 1

Introduction

Description 2
Principle of the Assay 2
Limitations of the Procedure 2

General Information

Materials Provided 3
Storage 3
Other Supplies Required 4
Precaution 4
Technical Hints 5

Assay Protocol

Sample Collection and Storage 5
Sample Preparation 6
Reagent Preparation 6, 7
Assay Procedure 7, 8

Analysis

Calculation of Results 8
Typical Data 8
Sensitivity 9
Precision 9
Recovery 9
Linearity 9
Calibration 10
Sample Values 10
Specificity 10

ASSAY PROCEDURE SUMMARY

1. Prepare all reagents and standards as directed.



2. Add 300 μ l *Washing Buffer* (1 \times) per well to soak for about 30 seconds. Use immediately after aspirate.



3. Add 100 μ l 2-fold diluted *Standard* to Standard well. Add 100 μ l *Standard Diluent/culture medium* to Blank well.



4. Serum/Plasma: Add 100 μ l prediluted sample to the sample well. Cell Culture Supernates: Add 100 μ l cell culture supernates to the sample well. (The dilution refers to the Sample Preparation on Page 6).



5. Add 50 μ l of diluted *Detect Antibody* to each well. Step 3, 4 and 5 should be completed within 15 minutes.



6. Cover with an *adhesive film*. Incubate for 2 hours at RT. Aspirate and wash 6 times.



7. Add 100 μ l of diluted *Streptavidin-HRP* to each well.



8. Cover with a fresh *adhesive film*. Incubate for 45 minutes at RT. Aspirate and wash 6 times.



9. Add 100 μ l *Substrate Solution* to each well. Incubate for 5 - 30 minutes at RT. Protect from light.



10. Add 100 μ l *Stop Solution* to each well.



11. Read at 450 nm within 30 minutes. Correction at 570 or 630 nm.

DESCRIPTION

The Notch signaling pathway is a ubiquitous pathway that controls a variety of processes during development. The Notch family comprises a group of highly conserved proteins that function both as cell surface receptors and direct regulators of gene transcription. It plays a significant role in the regulation of cell proliferation, apoptosis, differentiation, as well as a series of physiological and pathological processes. In addition, it has a vital effect in cancer occurrence and development. Notch-1 is a 300 kDa type 1 transmembrane glycoprotein that is one of four Notch homologues involved in developmental processes. Members of this Type 1 transmembrane protein family share structural characteristics including an extracellular domain consisting of multiple epidermal growth factor-like (EGF) repeats, and an intracellular domain consisting of multiple, different domain types. Notch family members play a role in a variety of developmental processes by controlling cell fate decisions.

Notch-1 pathway was associated with cellular differentiation, proliferation, apoptosis and adhesion. The aberrant activation of Notch-1 signaling pathway has been proven to be associated with the development and progression of cancers.

PRINCIPLE OF THE ASSAY

Human Notch-1 ELISA Kit is based on the quantitative sandwich enzyme-linked immunosorbent assay technique to measure concentration of human Notch-1 in the samples. An antibody specific for human Notch-1 has been immobilized onto microwells. Standard or samples are pipetted into the wells, followed by the addition of biotin-linked detect antibody specific for Notch-1, and Notch-1 present is bound by the immobilized antibody and detect antibody following the first incubation. After removal of any unbound substances, streptavidin-HRP is added for a second incubation. After washing, substrate solution reacts with HRP and color develops in proportion to the amount of Notch-1 bound by the immobilized antibody. The color development is stopped by addition of acid and the optical density value is measured by microplate reader.

LIMITATIONS OF THE PROCEDURE

- FOR RESEARCH USE ONLY. NOT FOR USE IN DIAGNOSTIC PROCEDURES.
- Do not use expired kit or reagents.
- Do not use reagents from other lots or manufacturers. Do not prepare component by yourself.
- If concentration of assayed factor in samples is higher than the highest standard, dilute the serum/plasma samples with *Assay Buffer*, dilute the cell culture supernate samples with *cell culture medium*. Reanalyze these and multiply results by the appropriate dilution factor.
- Any variation in testing personnel, sample preparation, standard dilution, pipetting technique, washing techniques, incubation time, temperature, kit age and equipment can cause variation in results.
- This assay is designed to eliminate interference by factors present in biological samples. Until all factors have been tested in the ELISA immunoassay, the possibility of interference cannot be excluded.

MATERIALS PROVIDED (96 Test)

Unopened kit should be stored at 2 - 8°C.



- **Human FGF basic Microplate** (1 plate): 96-well polystyrene microplate (12 strips of 8 wells) coated with an antibody against human FGF basic.
- **Human FGF basic Standard** (2 vials): Recombinant human FGF basic in a buffered protein base with preservatives; lyophilized.
- **Human FGF basic Detect Antibody** (1 vial, 70 µl): Biotin-conjugate anti- human FGF basic detect antibody; 100× liquid.
- **Standard Diluent** (1 bottle, 5 ml): In some, very rare cases, an insoluble precipitate of stabilizing protein has been seen in the Standard Diluent. This precipitate does not interfere in any way with the performance of the test and can thus be ignored.
- **Streptavidin-HRP** (1 vial, 140 µl): 100× liquid.
- **Assay Buffer (10×)** (1 bottle, 5 ml): PBS with 0.5 % Tween-20 and 5 % BSA.
- **Substrate** (1 bottle, 11 ml): TMB (tetramethyl-benzidine).
- **Stop Solution** (1 bottle, 11 ml): 0.18 M sulfuric acid.
- **Washing Buffer (20×)** (1 bottle, 50 ml): PBS with 1 % Tween-20.
- **Adhesive Films** (6 strips).

STORAGE

Store kit reagents between 2 and 8 °C . Immediately after use remaining reagents should be returned to cold storage (2 to 8°C). Expiry of the kit and reagents is stated on labels.

Expiration date of the kit components can only be guaranteed if the components are stored properly, and if, in case of repeated use of one component, this reagent is not contaminated by the first handling.

Unopened kit		Store at 2 - 8°C (See expiration date on the label).
Opened/ Reconstituted Reagents	1× Washing Buffer 1× Assay Buffer Stop Solution Standard Diluent Substrate TMB Detect Antibody Streptavidin-HRP	Up to 1 month at 2 - 8°C.
	Reconstituted Standard	Up to 1 month at ≤ -20°C in a manual defrost freezer. Avoid repeated freeze-thaw cycles.
	Microplate Wells	Up to 1 month at 2 - 8°C. Return unused strips to the foil pouch containing the desiccant pack, reseal along entire edge to maintain plate integrity.

Provided this is within the expiration date of the kit.

OTHER SUPPLIES REQUIRED

- **Microplate reader** capable of measuring absorbance at 450 nm, with correction wavelength set at 570 nm or 630 nm.
- **Pipettes and pipette tips.**
- 50 µl to 300 µl adjustable **multichannel micropipette** with disposable tips.
- Multichannel micropipette **reservoir.**
- **Beakers, flasks, cylinders** necessary for preparation of reagents.
- **Deionized or distilled water.**
- **Polypropylene** test tubes for dilution.

PRECAUTION

- All chemicals should be considered as potentially hazardous.
- We therefore recommend that this product is handled only by those persons who have been trained in laboratory techniques and that it is used in accordance with the principles of good laboratory practice. Wear suitable protective clothing such as laboratory overalls, safety glasses and gloves.
- Care should be taken to avoid contact with skin or eyes. In the case of contact with skin or eyes wash immediately with water. See material safety data sheet(s) and/or safety statement(s) for specific advice.
- The Stop Solution provided with this kit is an acid solution. Wear eyes, hand, face, and clothing protection when using this material.
- Reagents are intended for research use only and are not for use in diagnostic or therapeutic procedures.
- Do not mix or substitute reagents with those from other lots or other sources.
- Do not use kit reagents beyond expiration date on label.
- Do not expose kit reagents to strong light during storage and incubation.
- Do not eat or smoke in areas where kit reagents or samples are handled.
- Avoid contact of skin or mucous membranes with kit reagents or specimens.
- Rubber or disposable latex gloves should be worn while handling kit reagents or specimens.
- Avoid contact of substrate solution with oxidizing agents and metal.
- Avoid splashing or generation of aerosols.
- In order to avoid microbial contamination or cross- contamination of reagents or specimens which may invalidate the test use disposable pipette tips and/or pipettes.
- Use clean, dedicated reagent trays for dispensing the conjugate and substrate reagent.
- Exposure to acid inactivates the HRP and antibody conjugate.
- Glass-distilled water or deionized water must be used for reagent preparation.
- Substrate solution must be warmed to room temperature prior to use.
- Decontaminate and dispose specimens and all potentially contaminated materials as they could contain infectious agents. The preferred method of decontamination is autoclaving for a minimum of 1 hour at 121.5°C.
- Liquid wastes not containing acid and neutralized waste may be mixed with sodium hypochlorite in volumes such that the final mixture contains 1.0 % sodium hypochlorite. Allow 30 minutes for effective decontamination. Liquid waste containing acid must be neutralized prior to the addition of sodium hypochlorite.
- In some cases, an insoluble precipitate of stabilizing protein has been seen in the Standard Diluent. This precipitate does not interfere in any way with the performance of the test and can thus be ignored. Or remove precipitate by centrifuging at 6,000 × g for 5 minutes.

TECHNICAL HINTS

- When mixing or reconstituting protein solutions, always avoid foaming.
- To avoid cross-contamination, change pipette tips between additions of each standard level, between sample additions, and between reagent additions. Also, use separate reservoirs for each reagent.
- When using an automated plate washer, adding a 30 seconds soak period before washing step and/or rotating the plate between wash steps may improve assay precision.
- To ensure accurate results, proper adhesion of plate sealers during incubation steps is necessary.
- Substrate Solution should remain colorless until added to the plate. Keep Substrate Solution protected from light. Substrate Solution should change from colorless to gradations of blue.
- Stop Solution should be added to the plate in the same order as the Substrate Solution.
- The color developed in the wells will turn from blue to yellow upon addition of the Stop Solution. Wells that are green in color indicate that the Stop Solution has not mixed thoroughly with the Substrate Solution.
- It is recommended that all samples and standards be assayed in duplicate.
- Take care not to scratch the inner surface of the microwells.
- High background maybe occur when using some cell culture medium as standard diluent.

SAMPLE COLLECTION AND STORAGE

Cell Culture Supernates – Remove particulates by centrifugation at $300 \times g$ for 10 minutes and assay immediately or aliquot and store samples at $\leq -20^{\circ}\text{C}$.

Serum – Use a serum separator tube (SST) and allow samples to clot for 30 minutes before centrifugation for 10 minutes at $1,000 \times g$. Remove serum and assay immediately or aliquot and store samples at $\leq -20^{\circ}\text{C}$.

Plasma – Collect plasma using EDTA, citrate or heparin as anticoagulant. Centrifuge at $1,000 \times g$ within 30 minutes of collection. Assay immediately or aliquot and store samples at $\leq -20^{\circ}\text{C}$.

Other biological samples might be suitable for use in the assay. Cell culture supernates, serum and plasma were tested with this assay.

Note: Samples containing a visible precipitate must be clarified prior to use in the assay. Do not use grossly hemolyzed or lipemic specimens.

Samples should be aliquoted and must be stored frozen at -20°C to avoid loss of bioactive human Notch-1. If samples are to be run within 24 hours, they may be stored at 2 to 8°C .

Avoid repeated freeze-thaw cycles. Prior to assay, the frozen sample should be brought to room temperature slowly and mixed gently.

SAMPLE PREPARATION

Normal serum and plasma samples require a 20-fold dilution. A suggested 20-fold dilution is 10 μ l sample + 190 μ l Assay Buffer (1 \times).

REAGENT PREPARATION

Bring all reagents and samples to room temperature before use.

If crystals form in the Buffer Concentrates, warm and gently stir them until completely dissolved.

Washing Buffer (1 \times)

Pour entire contents (50 ml) of the **Washing Buffer (20 \times)** into a clean 1,000 ml graduated cylinder. Bring to final volume of 1,000 ml with pure or deionized water.

Mix gently to avoid foaming.

Transfer to a clean wash bottle and store at 2 to 25 $^{\circ}$ C. Washing Buffer (1 \times) is stable for 30 days.

Assay Buffer (1 \times)

Pour the entire contents (5 ml) of the **Assay Buffer (10 \times)** into a clean 100 ml graduated cylinder. Bring to final volume of 50 ml with distilled water. Mix gently to avoid foaming.

Store at 2 to 8 $^{\circ}$ C. Assay Buffer (1 \times) is stable for 30 days.

Detect Antibody

Mix well prior to making dilutions.

Make a **1: 100** dilution of the concentrated **Detect Antibody** solution with Assay Buffer (1 \times) in a clean plastic tube as needed.

The diluted Detect Antibody should be used within 30 minutes after dilution.

Streptavidin-HRP

Mix well prior to making dilutions.

Make a **1: 100** dilution of the concentrated **Streptavidin-HRP** solution with Assay Buffer (1 \times) in a clean plastic tube as needed.

The diluted Streptavidin-HRP should be used within 30 minutes after dilution.

Sample Dilution

If your samples have high Notch-1 content, dilute serum/plasma samples with Assay Buffer (1 \times). For cell culture supernates, dilute with cell culture medium.

Human Notch-1 Standard

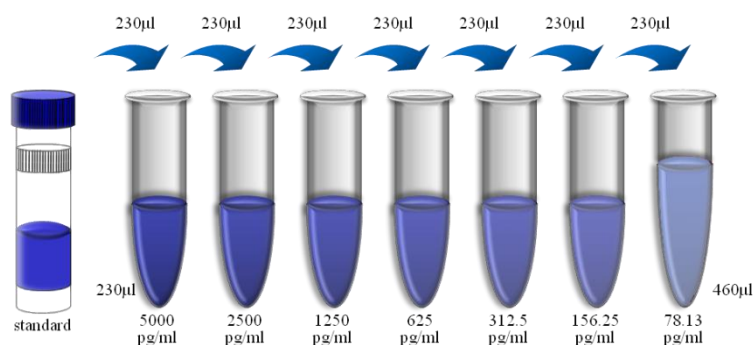
Briefly spin the vial at 6,000 rpm for 30 seconds before opening. Reconstitute **Human Notch-1 Standard** by addition of distilled water. Reconstitution volume is stated on the label of the standard vial. Swirl or mix gently to insure complete and homogeneous solubilization (concentration of reconstituted standard =10 ng/ml).

Allow the standard to reconstitute for 10 - 30 minutes. Mix well prior to making dilutions.

Use polypropylene tubes.

For serum/plasma samples, mixing *concentrated human Notch-1 standard* (230 μ l) with 230 μ l of *Standard Diluent* creates the high standard (5,000 pg/ml). Pipette 230 μ l of *Standard Diluent* into each tube. Use the high standard to produce a 1:1 dilution series (scheme below). Mix each tube thoroughly before the next transfer. *Standard Diluent* serves as the zero standard (0 pg/ml).

For cell culture supernates, mixing *concentrated human Notch-1 standard* (230 μ l) with 230 μ l of cell culture medium creates the high standard (5,000 pg/ml). Pipette 230 μ l of cell culture medium into each tube. Use the high standard to produce a 1:1 dilution series. Mix each tube thoroughly before the next transfer. Cell culture medium serves as the zero standard (0 pg/ml).



ASSAY PROCEDURE

Bring all reagents and samples to room temperature before use.

1. Prepare all reagents including microplate, samples, standards and working solution as described in the previous sections.
2. Remove excess microplate strips and return them to the foil pouch containing the desiccant pack, and reseal for further use.
3. Add 300 μ l *Washing Buffer (1 \times)* per well, and allow it for about 30 seconds before aspiration. Soaking is highly recommended to obtain a good test performance. Empty wells and tap microwell strips on absorbent pad or paper towel to remove excess *Washing Buffer (1 \times)*. Use the microwell strips immediately after washing. **Do not allow wells to dry.**
4. Add 100 μ l of 2-fold diluted *Standard* to Standard well in duplicate. Add 100 μ l of *Standard Diluent* / culture medium to Blank well in duplicate.
5. Serum/Plasma: Add 100 μ l prediluted sample to the sample well. Cell culture supernates: Add 100 μ l cell culture supernates to the sample well. (The dilution refers to the Sample Preparation on Page 6).
6. Add 50 μ l of **1:100** diluted *Detect Antibody* to each well. Ensure reagent addition in step 4, 5 and 6 is uninterrupted and completed within 15 minutes.
7. Seal the plate with an *adhesive film*. Incubate at room temperature (18 to 25 $^{\circ}$ C) for 2 hours on a microplate shaker set at 300 rpm.
8. Aspirate each well and wash, repeating the process five times for a total six washes. Wash by filling each well with 300 μ l *Washing Buffer (1 \times)*. Complete removal of liquid at each step is essential to good performance. After the last wash, remove any remaining Wash Buffer by aspirating or decanting. Invert the plate and blot it against clean paper towels.
9. Add 100 μ l of **1:100** diluted *Streptavidin-HRP* to each well.

10. Seal the plate with a fresh *adhesive film*. Incubate at room temperature (18 to 25 °C) for 45 minutes on a microplate shaker set at 300 rpm.
11. Repeat aspiration/wash as in step 8.
12. Add 100 µl of *Substrate Solution* to each well. Incubate for 5 - 30 minutes at room temperature. Protect from light.
13. Add 100 µl of *Stop Solution* to each well. The color will turn yellow. If the color in the well is green or if the color change does not appear uniform, gently tap the plate to ensure thorough mixing.
14. Measure the optical density value within 30 minutes by microplate reader set to 450 nm. If wavelength correction is available, set to 570 nm or 630 nm. If wavelength correction is not available, subtract readings at 570 nm or 630 nm from the readings at 450 nm. This subtraction will correct for optical imperfections in the plate. Reading directly at 450 nm without correction may generate higher concentration than true value.

CALCULATION OF RESULTS

Average the duplicate optical density readings for each standards and sample, then subtract the average optical density value of the zero standard.

Standard Concentration as horizontal axis, optical density (OD) Value as the vertical axis, regressing the data and create a standard curve using computer software. The data may be linearized by plotting the log of the Notch-1 concentrations versus the log of the OD and the best fit line can be determined by regression analysis. This procedure will produce an adequate but less precise fit of the data.

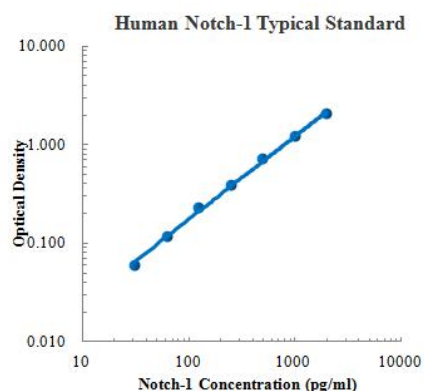
Note: The finally concentration of top standard is 5,000 pg/ml.

If samples have been diluted following the instruction, the final dilution factor is 20. If sample have been diluted by other means, the concentration read from the standard curve must be multiplied by the appropriate dilution factor.

TYPICAL DATA

A standard curve must be run within each assay. This standard curve is provided for demonstration only.

pg/ml	O.D.	Average	Corrected
0.00	0.027	0.026	0.027
78.13	0.076	0.073	0.075
156.25	0.124	0.116	0.120
312.5	0.216	0.214	0.215
625.00	0.396	0.410	0.403
1250.00	0.696	0.675	0.686
2500.00	1.330	1.256	1.293
5000.00	2.156	2.147	2.125



SENSITIVITY

The minimum detectable dose (MDD) of Notch-1 is typically less than 3.38 pg/ml (mean of 6 independent assays).

The MDD was determined by adding two standard deviations to the mean optical density value of ten zero standard replicates and calculating the corresponding concentration.

PRECISION

Intra-assay Precision (Precision within an assay)

Three serum-based and buffer-based samples of known concentration were tested twenty times on one plate to assess intra-assay precision.

Inter-assay Precision (Precision between assays)

Three serum-based and buffer-based samples of known concentration were tested in six separate assays to assess inter-assay precision.

	Intra-assay precision			Inter-assay precision		
Sample	1	2	3	1	2	3
n	20	20	20	6	6	6
Mean (pg/ml)	138.2	582.5	2446.1	138.1	572.5	2415.2
Standard deviation	4.5	14.2	48.3	6.3	26.7	65.1
CV (%)	3.3	2.4	2.0	4.6	4.6	2.7

RECOVERY

The spike recovery was evaluated by spiking 3 levels of human Notch-1 into five health human serum samples. The un-spiked serum was used as blank in these experiments.

The recovery ranged from 82 % to 118 % with an overall mean recovery of 98 %.

LINEARITY

To assess the linearity of the assay, five samples were spiked with high concentration of Notch-1 in rat serum and diluted with Standard Diluent to produce samples with values within the dynamic range of the assay.

	Average (%)	Range (%)
1:2	92	82 - 102
1:4	96	85 - 113
1:8	90	85 - 106
1:16	98	93 - 112

CALIBRATION

This immunoassay is calibrated against a highly purified recombinant human Notch-1 produced at MultiSciences.

SAMPLE VALUES

Serum/Plasma – Thirty samples from apparently healthy volunteers were evaluated for the presence of Notch-1 in this assay. No medical histories were available for the donors used in this study.

Sample Matrix	Number of Samples Evaluated	Range (ng/ml)	Detectable (%)	Mean of Detectable (ng/ml)
Serum	30	1.9 – 12.7	100	5.6

Note: The sample range is non-physiological range. The sample range of healthy human will difference according to geographical, ethnic, sample preparation, and testing personnel, equipment varies. The above information is only reference.

SPECIFICITY

This kit could assay both natural and recombinant human Notch-1. A panel of substances listed below were prepared at 1 ng/ml in Standard Diluent to determine cross-reactivity. Preparations of the following substances at 1 ng/ml in a mid-range rhNotch-1 control to determine interference. No significant cross-reactivity or interference was observed.

Human	Mouse	Rat
DLL1 DNER/Fc Chimera Jagged 1/Fc Chimera Jagged 2/Fc Chimera Notch-2/Fc Chimera Notch-3/Fc Chimera	Notch-1/Fc Chimera	Notch-1/Fc Chimera Notch-2/Fc Chimera

PLATE LAYOUT

